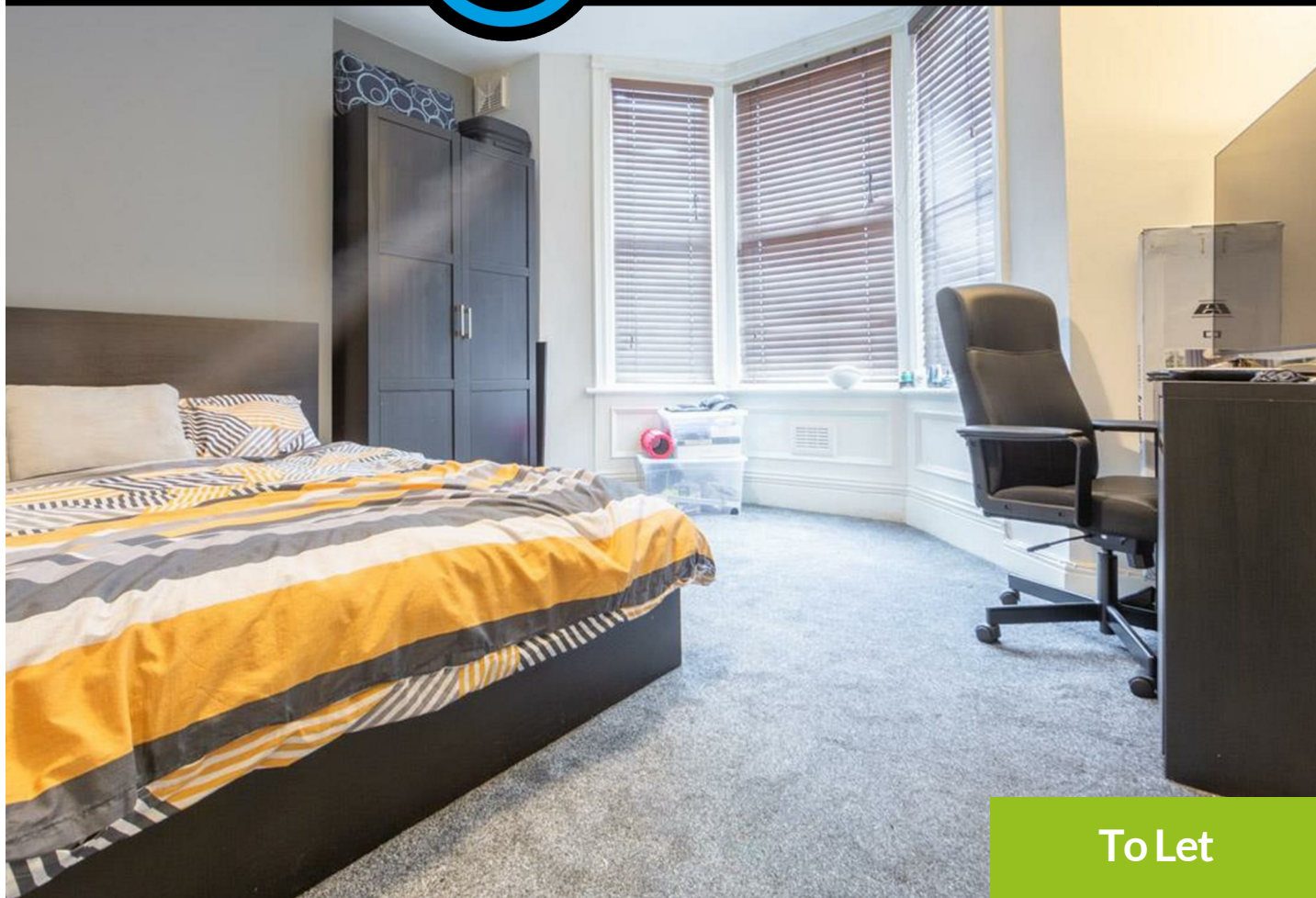




# WALTON ROBINSON



To Let

## 2 Amble Grove, Sandyford NE2 1NY

£1,195 PCM

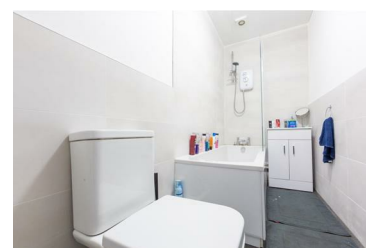
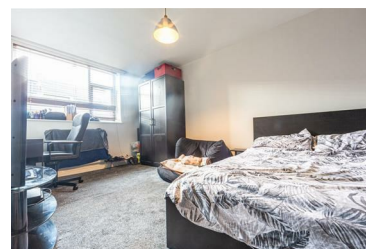
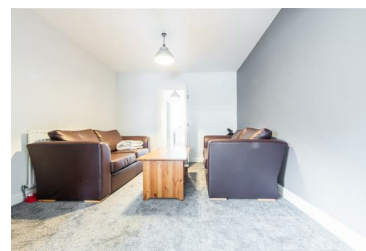


£137.51 PPPW Spacious two bedroom property to rent on Amble Grove, Sandyford, which has recently been REFURBISHED. The property is located on the quiet and leafy Amble Grove, close to an abundance of local amenities, great transport links and Jesmond Dene. Northumbria and Newcastle Universities are both only a short walk away, perfect for students.

The property itself has two generous double bedrooms, spacious lounge and open plan kitchen including all the appliances. The property also benefits uPVC double glazing and gas central heating throughout. Externally the property has a space for a car to the rear.

\*\*All property descriptions are assumed correct at time of publication. Any reference to property details, specifications or other inclusions are subject to change and may be altered at any given time.

- Ground Floor Tyneside Flat
- Spacious Living Room
- Ideal Sandyford Location
- £137.51 PPPW / £1,195 PCM
- EPC Rating - C
- Two Double Bedrooms
- Open Plan Kitchen
- Parking Available
- AVAIL 13/07/2026 - 13/07/2027
- COUNCIL TAX BAND - A



101 Percy Street, City Centre, Newcastle upon Tyne, NE1 7RY

T: 01912431000 | Email: [enquiries@seekersproperty.co.uk](mailto:enquiries@seekersproperty.co.uk) | [www.waltonrobinson.com](http://www.waltonrobinson.com)